



*Specialized in
standard and
custom made
packaging*



Table of contents

Introduction	Page 3	Trays	
From a sketch to the end product	Page 4	Carton topseal trays	Page 30
Better Plastics	Page 6	Carton trays	Page 32
FSC® Paper	Page 7	rPET topseal trays	Page 34
		Pulp (topseal) trays	Page 36
Buckets		Topseal cups	
rPET buckets	Page 10	rPET topseal cups Ø 95 mm	Page 40
Carton buckets	Page 12	rPET topseal cups Ø 110 mm	Page 42
PP buckets	Page 14	rPET topseal cups Ø 115 mm	Page 44
Fruit & Salad Bowls	Page 16	rPET delircircle cups Ø 115 mm	Page 46
		rPET topseal bowls Ø 150 mm	Page 48
Cups & Shakers		rPET rectangular trays	Page 50
Carton cups	Page 20	Mussel trays	Page 52
rPET shakers Ø 92 mm	Page 22	Specials	Page 54
rPET shakers Ø 95 mm	Page 24		
Square cups	Page 26		

Poorthuis Packaging BV

Office address:

De Watergang 29
7671 SV Vriezenveen

Almelo Warehouse:

Bedrijvenpark Twente Noord 39
7602 KR Almelo

Tel: +31 (0) 546 56 33 13
+31 (0) 546 56 50 14

Email: sales@poorthuisbv.nl

website: www.poorthuispackaging.nl



It is with great enthusiasm that we present to you this brochure introducing our latest packaging solutions for the AGF market. As a leading supplier of packaging for the food industry, we understand that quality, sustainability and efficiency are critical to your day-to-day operations and success.

The AGF sector faces unique challenges from ensuring product freshness to minimising food waste. Our packaging is specially designed to meet these needs. We offer innovative and eco-friendly solutions that not only extend the shelf life of your products, but also help maintain their quality during transport and storage.

Sustainability is one of our core values, and we are proud that our packaging meets the strictest environmental standards. We are committed to developing recyclable and better materials, so that together we can build a more sustainable future.

At every step of our design process, we take your specific requirements into account. Whether it is customisation, branding or innovative closure systems, we think with you to best present and protect your product.

We invite you to browse through this brochure and discover how our packaging can make your AGF products excel. Together we can shape the future of packaging, with a keen eye for innovation and sustainability.



From a sketch to the end product

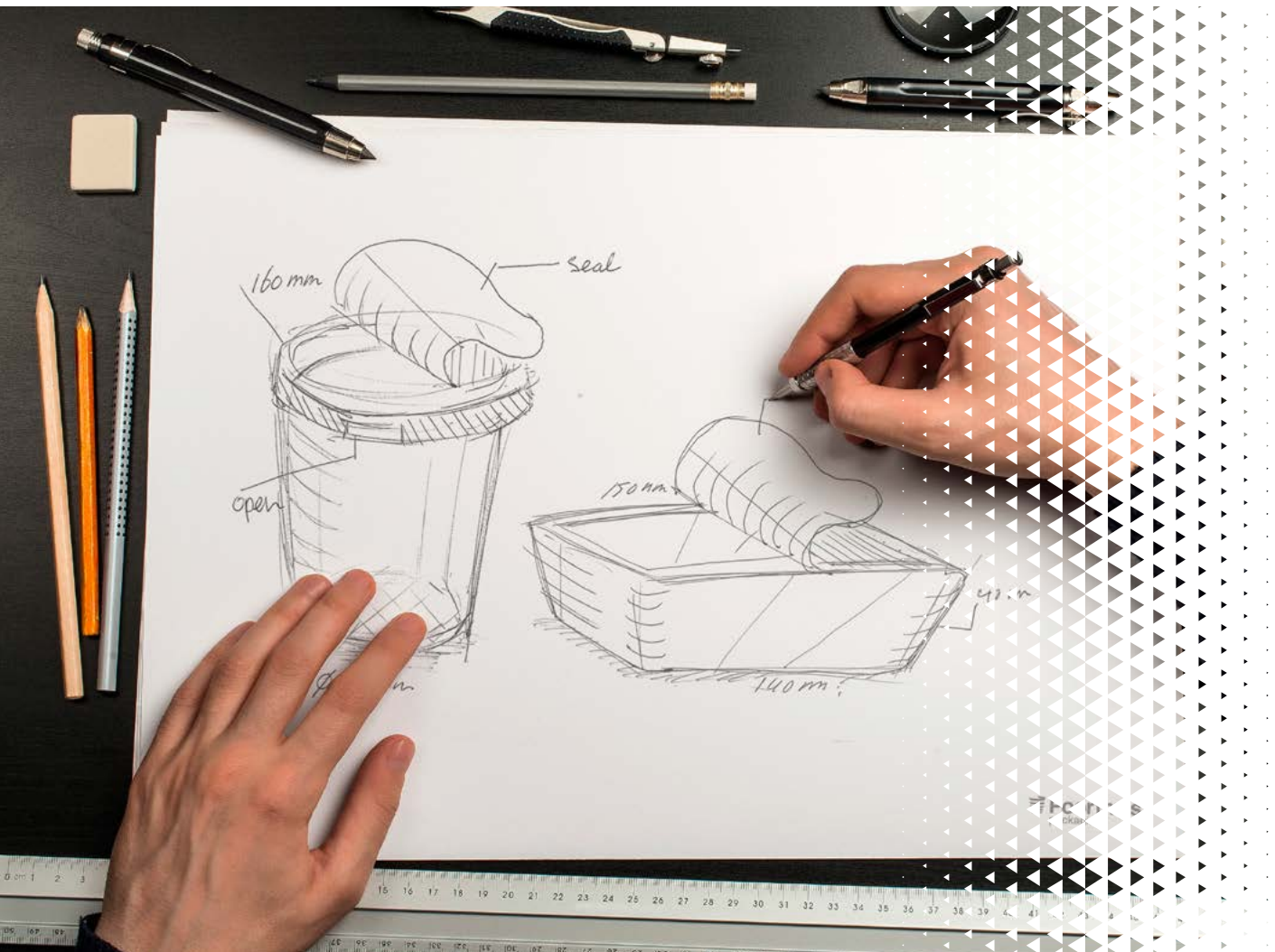
Our team of specialists will be happy to design the most suitable packaging for your product. We take into account ease of use, most suitable production technique and durability.

We start by making sketches. During this process, we consider which production technique is best and the requirements the packaging must meet. This could involve automatic processing or filling the products under special conditions (pasteurisation/freezing).

After you have approved the sketches, we make a 3D model so you can physically assess the end result. It

is also possible to fill it with a product to give you a realistic idea of the final packaging.

When you are completely satisfied, the production mould can be made. Our specialists will advise and guide you through the entire process so that you can ultimately use the perfect packaging for your product!



Poorthuis Packaging understands the unique requirements of the food service segment with its need for a wide and diverse range. We offer a wide range of standard packaging as well as custom made packaging for the (non food) market. Our marketing and sales specialists can also work with you to design innovative (custom-made) packaging for your product.

“We have an affinity with a variety of production options, such as cardboard production, thermoforming and injection moulding”.

We have an affinity with a variety of production options, such as cardboard production, thermoforming and injection moulding. We are not limited to any specific type of material. We will look at which material can best be used for your product. This could, for example, be cardboard, polypropylene or (recycled) PET.

At our headquarters in Vriezenveen, we have an in-house print shop where your packaging can be decorated. Besides offset printing, we can also apply in-mould labelling (IML) or adhesive labels. Our location in Almelo has space for 4,000 pallets and we can deliver your packaging straight from stock!



Better Plastics: closing the loop for a sustainable future

At the heart of our vision lies a strong belief in the principles of a circular economy—an economy where the use of new raw materials is minimized, and existing resources are given a new life through recycling. We are committed to reducing waste and promoting sustainability by ensuring that packaging materials already in circulation are effectively recycled and reused.



Through our Better Plastics initiative, we have transformed this belief into action. Our innovative approach allows us to produce packaging from post-consumer materials, setting a new standard in sustainable packaging solutions.

“Through our Better Plastics initiative, we have transformed this belief into action”.

Unlike conventional methods that rely heavily on bottle flakes—a common source of post-consumer plastics—we use a system that recycles a broader range of materials, including trays and other food packaging widely used in the market.

This innovative use of recycled materials has enabled us to establish a closed-loop recycling system. In this system, the packaging we produce is specifically designed to re-enter the recycling process at the end of its life. This approach significantly reduces our dependence on virgin materials while minimizing environmental impact. By adopting this model, we not only uphold the principles of a circular economy but also empower both consumers and businesses to actively contribute to a more sustainable future. Together, we are redefining the lifecycle of packaging, turning it from a disposable product into a renewable resource that benefits the planet.

By rethinking how we use and recycle materials, we are paving the way for a world where plastic waste is no longer a problem but part of the solution. Together, through innovation and collaboration, we can make Better Plastics a reality—one that benefits the planet, its people, and future generations.



This product is made from materials from well-managed, FSC®-certified forests and other controlled sources.

FSC® Paper: a commitment to responsible forestry

By choosing FSC-certified paper, we actively support responsible forestry practices that balance environmental, social, and economic needs.

FSC (Forest Stewardship Council®) certification ensures that the paper we use comes from forests managed with care and respect for nature. These forests are protected against overharvesting, with strict measures in place to conserve biodiversity, safeguard wildlife habitats, and maintain the health of ecosystems.

Beyond environmental benefits, FSC certification also focuses on social responsibility. It upholds the rights of workers and local communities, ensuring fair wages, safe working conditions, and the active involvement of indigenous peoples in forest management decisions. This holistic approach makes FSC-certified paper a sustainable choice that positively impacts both people and the planet.

BUCKETS





RPET BUCKETS



**AND ALSO AVAILABLE
WITH HANDLE**



rPET buckets

ARTICLE NO, ARTICLE DESCRIPTION	MATERIAL / COLOR	DIMENSIONS (diameter x height)	WEIGHT	PRINT
RB 7027 rPET bucket 250/300 g	rPET / transp.	Ø 118 mm, 80 mm	22,4 gram	✓
RB 7030 rPET bucket 300 g	rPET / transp.	Ø 118 mm, 95 mm	22,4 gram	✓
RB 7028 rPET bucket 400 g	rPET / transp.	Ø 118 mm, 102 mm 2	2,4 gram	✓
RB 7031 rPET bucket 500 g	rPET / transp.	Ø 118 mm, 130 mm	22,8 gram	✓
RB 7110 Topseal rPET bucket 500 g	rPET / transp.	Ø 118 mm, 124 mm	20 gram	✓
RB 7519 Lid with/without holes (inside closure)	rPET / transp.	Ø 118 mm, 17 mm	5,8 gram	



RB 7027



RB 7030



RB 7028



RB 7031



RB 7110



RB 7519

CARTON BUCKETS



Carton buckets

ARTICLE NO, ARTICLE DESCRIPTION	MATERIAL / COLOR	DIMENSIONS (diameter x height)	WEIGHT	PRINT
RB 7324 Carton bucket 200/250 g	carton / white, brown	Ø 115 mm, 63 mm	10 gram	✓
RB 7332 Carton bucket 300 g	carton / white, brown	Ø 115 mm, 83 mm	12 gram	✓
RB 7338 Carton bucket 400 g	carton / white, brown	Ø 115 mm, 100 mm	14 gram	✓
RB 7329 Carton bucket 500 g	carton / white, brown	Ø 115 mm, 126 mm	16,5 gram	✓
RB 7558 NPCL Lid flat with holes	rPET	Ø 115 mm, 23,5 mm	5,2 gram	
RB 7559 Lid flat without holes	rPET	Ø 115 mm, 23,5 mm	5,2 gram	



RB 7324



RB 7332



RB 7338



RB 7329



RB 7558 NPCL



RB 7559

PP BUCKETS



Various colors handles

We have various colors of handles, which can be a real addition to the design to create a uniform appearance.



PP buckets

ARTICLE NO, ARTICLE DESCRIPTION	MATERIAL / COLOR	DIMENSIONS (diameter x height)	WEIGHT	PRINT
RB 7099* Bucket with ventilation holes 300 g	PP / transp./white	Ø 118 mm, 80 mm	20,7 gram	✓
RB 7096* Bucket with ventilation holes 400 g	PP / transp./white	Ø 118 mm, 100 mm	22 gram	✓
RB 7056* Bucket with ventilation holes 500 g	PP / transp./white	Ø 118 mm, 122 mm	27 gram	✓
RB 7056 LW* Bucket with wall holes 500 g	PP / transp./white	Ø 118 mm, 122 mm	21,5 gram	✓
RB 7056-22 LW Bucket with ventilation holes 500 g	PP / transp.	Ø 118 mm, 122 mm	22,6 gram	✓
RB 7536 A Lid with ventilation holes	rPET / transp.	Ø 118 mm, 19 mm	5,8 gram	
RB 7092* Bucket with ventilation holes 1 kilo	PP / transp.	Ø 148 mm, 58 mm	44 gram	✓
RB 7520* Lid with ventilation holes	PP / transp.	Ø 148 mm, 9 mm	12 gram	

* Available with/without handle, with/without ventilation holes



RB 7099



RB 7096



RB 7056



RB 7056 LW



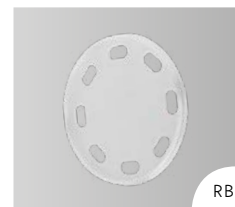
RB 7056-22 LW



RB 7536 A



RB 7092



RB 7520

FRUIT & SALAD BOWLS



Fruit & Salad bowls

ARTICLE NO, ARTICLE DESCRIPTION	MATERIAL / COLOR	DIMENSIONS (diameter x height)	WEIGHT	PRINT
RB 7258 Bowl 750 ml	carton / white, brown	Ø 149,5 mm, 60 mm	12,8 gram	✓
RB 7259 Bowl 1000 ml	carton / white, brown	Ø 149,5 mm, 60 mm	14,6 gram	✓
RB 7260 Bowl 1300 ml	carton / white, brown	Ø 184 mm, 67 mm	17,3 gram	✓
RB 7575 Bowl lid	rPET / transp.	Ø 149,5 mm	8,9 gram	
RB 7576 Bowl lid	rPET / transp.	Ø 184 mm	12,5 gram	

(Print / Custommade from 10.000 pcs)



RB 7258



RB 7259



RB 7260



RB 7575



RB 7576

CUPS & SHAKERS





CARTON CUPS



This product is made from materials from well-managed, FSC®-certified forests and other controlled sources.

Carton cups

ARTICLE NO, ARTICLE DESCRIPTION	MATERIAL / COLOR	DIMENSIONS (diameter x height)	WEIGHT	PRINT
RB 7328 Carton cup 175 gram	carton / white, brown	Ø 92 mm, 60 mm	9 gram	✓
RB 7319 Carton cup 250 gram	carton / white, brown	Ø 92 mm, 110 mm	10,7 gram	✓
RB 7515 Lid Ø 92 mm dome without hole	rPET	Ø 92 mm, 45 mm	4 gram	
RB 7518 Lid dome with 1 hole	rPET	Ø 92 mm, 45 mm	4 gram	
RB 7530 Lid dome with 4 holes	rPET	Ø 92 mm, 40 mm	4 gram	
RB 7537 NPCL Lid Ø 92 mm flat with hole	rPET	Ø 92 mm, 30 mm	4 gram	



RB 7328



RB 7319



RB 7515



RB 7518



RB 7530

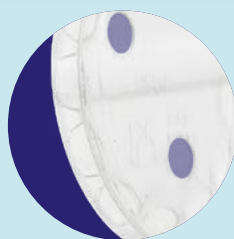


RB 7537 NPCL

RPET SHAKERS Ø92 MM



Optional holes



rPET Shakers ø92 mm

ARTICLE NO, ARTICLE DESCRIPTION	MATERIAL / COLOR	DIMENSIONS (diameter x height)	WEIGHT	PRINT
RB 7076 Shaker 175 g	rPET / transp.	Ø 92 mm , 80 mm	9,2 gram	✓
RB 7070 Shaker 250 g	rPET / transp.	Ø 92 mm, 108 mm	11 gram	✓
RB 7050 Shaker 250 g	rPET / transp.	Ø 92 mm, 117 mm	11 gram	✓
RB 7075 Shaker 300 g	rPET / transp.	Ø 92 mm, 145 mm	13 gram	✓
RB 7541 Lid dome with insertcup	rPET / transp.	Ø 92 mm , 32 mm	6 gram	
RB 7515 Lid dome without hole	rPET / transp.	Ø 92 mm, 45 mm	4 gram	
RB 7524 Lid dome with 5 holes	rPET / transp.	Ø 92 mm, 40 mm	4 gram	
RB 7537 Lid flat with hole	rPET / transp.	Ø 92 mm, 30 mm	4 gram	
RB 7518 Lid dome with hole	rPET / transp.	Ø 92 mm, 45 mm	4 gram	



RB 7076



RB 7070



RB 7050



RB 7075



RB 7541



RB 7515



RB 7524



RB 7537



RB 7518

RPET SHAKERS Ø95 MM



rPET Shakers ø95 mm

ARTICLE NO, ARTICLE DESCRIPTION	MATERIAL / COLOR	DIMENSIONS (diameter x height)	WEIGHT	PRINT
RB 7069 Shaker 95 - 280	rPET / transp.	Ø 95 mm, 90 mm	8,6 gram	✓
RB 7078 Shaker 95 - 300	rPET / transp.	Ø 95 mm, 95 mm	8 gram	✓
RB 7022 Shaker 95 - 425	rPET / transp.	Ø 95 mm, 105 mm	11,5 gram	✓
RB 7023 Shaker 95 - 550	rPET / transp.	Ø 95 mm, 125 mm	11,5 gram	✓
RB 7024 Shaker 95 - 650	rPET / transp.	Ø 95 mm, 150 mm	13 gram	✓
RB 7526 Lid dome without hole	rPET / transp.	Ø 95 mm, 45 mm	4 gram	
RB 7514 Lid dome with 1 hole	rPET / transp.	Ø 95 mm, 45 mm	3,8 gram	
RB 7533 Lid flat without hole	rPET / transp.	Ø 95 mm, 30 mm	3 gram	
RB 7545 Lid flat with holes	rPET / transp.	Ø 95 mm, 30 mm	4 gram	



RB7069



RB 7078



RB 7022



RB 7023



RB 7024



RB7526



RB 7514



RB 7533



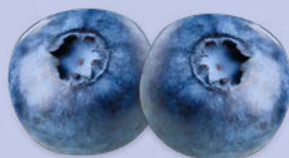
RB 7545

SQUARE CUPS



Square cups futures

Our square cups are provided with a tamper evident closure. The lids are also equipped with a handy dosing system.



Square cups

ARTICLE NO, ARTICLE DESCRIPTION	MATERIAL / COLOR	DIMENSIONS	WEIGHT	PRINT
RB 7208 Square cup 385 ml 175 g	PP / transp./white	86 x 72 mm, 102 mm	14 gram	✓
RB 7209 Square cup 520 ml 250 g	PP / transp./white	86 x 72 mm, 133 mm	18 gram	✓
RB 7516* Lid square cups serie	PP / transp./white	89 x 69 mm, 7 mm	4 gram	✓

*Available with and without hole



TRAYS





CARTON TOPSEAL TRAYS



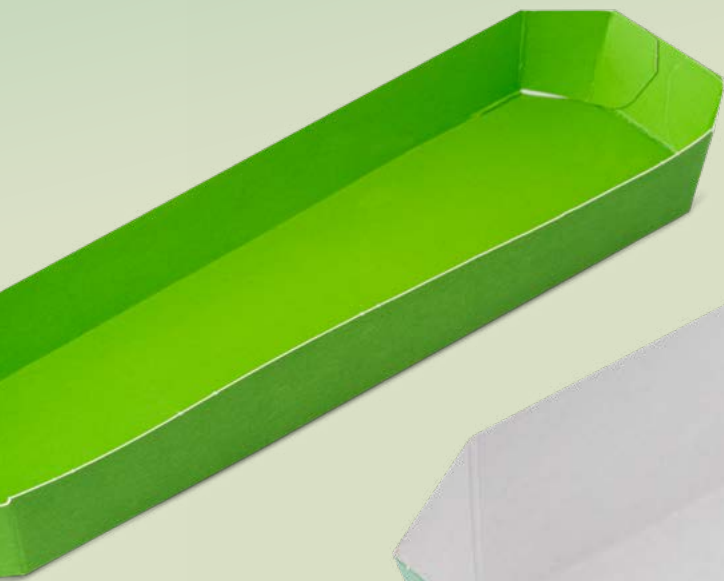
Carton topseal trays

ARTICLE NO, ARTICLE DESCRIPTION	MATERIAL / COLOR	DIMENSIONS	PRINT*	TOPSEAL
RB 7600 Topseal tray (K37) height 48mm	carton	184 x 117 x 48	✓	✓
RB 7601 Topseal tray (K37) height 60mm	carton	184 x 117 x 60	✓	✓
RB 7602 Topseal tray (K37) height 70mm	carton	184 x 117 x 70	✓	✓
RB 7603 Topseal tray (K37) height 90mm	carton	184 x 117 x 90	✓	✓
RB 7604 Topseal tray (K28) height 34mm	carton	135 x 113 x 34	✓	✓
RB 7605 Topseal tray (K28) height 45mm	carton	135 x 113 x 45	✓	✓
RB 7606 Topseal tray (K60) height 40mm	carton	182 x 182 x 40	✓	✓
RB 7607 Topseal tray (K60) height 50mm	carton	182 x 182 x 50	✓	✓
RB 7608 Topseal tray (K60) height 60mm	carton	182 x 182 x 60	✓	✓
RB 7609 Topseal tray (K60) height 82mm	carton	182 x 182 x 82	✓	✓
RB 7610 Topseal tray (K30) height 60mm	carton	141 x 117 x 60 <i>-in development-</i>	✓	✓
RB 7611 Topseal tray (K30) height 90mm	carton	141 x 117 x 90 <i>-in development-</i>	✓	✓

*The carton topseal tray can be printed on both sides.



CARTON TRAYS



Carton trays

ARTICLE NO, ARTICLE DESCRIPTION	MATERIAL / COLOR	DIMENSIONS	PRINT*
RB 7620 Carton tray	carton	270 x 100 x 30	✓
RB 7621 Carton tray	carton	174 x 108 x 25	✓
RB 7622 Carton tray	carton	160 x 100 x 35	✓
RB 7623 Carton tray	carton	216 x 90 x 43	✓
RB 7624 Carton tray	carton	165 x 165 x 40	✓

In addition to our standard range, all sizes or printed version are available within 2 weeks

Fast, flexible, good.

*The carton trays can be printed on both sides.



RPET TOPSEAL TRAYS



rPET topseal trays

ARTICLE NO, ARTICLE DESCRIPTION	MATERIAL / COLOR	DIMENSIONS	WEIGHT	TOPSEAL
RB 7228 Topseal tray 250 g	rPET / transp.	141 x 119 mm, 52 mm	10,5 gram	✓
RB 7246 Topseal tray 300 g	rPET / transp.	141 x 119 mm, 60 mm	11,1 gram	✓
RB 7257 Topseal tray 400 g	rPET / transp.	141 x 119 mm, 75mm	12 gram	✓
RB 7227 Topseal tray 500 g	rPET / transp.	141 x 119 mm, 85 mm	12,1 gram	✓
RB 7248 Topseal tray 500 g	rPET / transp.	114 x 119 mm, 90 mm	14 gram	✓
RB 7249 Topseal tray 600 g	rPET / transp.	141 x 119 mm, 95 mm	16 gram	✓
RB 7242 Topseal tray 1000 g	rPET / transp.	180 x 180 mm, 77 mm	26 gram	✓



RB 7228



RB 7246



RB 7257



RB 7227



RB 7248



RB 7249



RB 7242

PULP (TOPSEAL) TRAYS



Pulp (topseal) trays

ARTICLE NO, ARTICLE DESCRIPTION	MATERIAL / COLOR	DIMENSIONS	TOPSEAL
RB 7268 Topseal tray (K37), height 80mm	pulp	184 x 117 x 80	✓
RB 7272 Topseal tray (K30), height 90mm	pulp	141 x 119 x 90	✓
RB 7271 Topseal tray (K37), height 105mm	pulp	184 x 117 x 105	✓
RB 7274 Avocado tray, height 35mm	pulp	170 x 110 x 35	



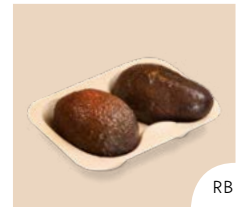
RB 7268



RB 7272



RB 7271



RB 7274

TOPSEAL CUPS





RPET TOPSEAL CUPS Ø95 MM



rPET topseal cups ø95 mm

ARTICLE NO, ARTICLE DESCRIPTION	MATERIAL / COLOR	DIMENSIONS (diameter x height)	WEIGHT	PRINT	TOPSEAL
RB 7046 Topseal cup 200ml	rPET / transp.	Ø 95 mm, 53mm	7 gram	✓	✓
RB 7062 Topseal cup 260ml	rPET / transp.	Ø 95mm, 62mm	8 gram	✓	✓
RB 7047 Topseal cup 280ml	rPET / transp.	Ø 95 mm, 74mm	10 gram	✓	✓
RB 7048 Topseal cup 350ml	rPET / transp.	Ø 95 mm, 90mm	11,5 gram	✓	✓
RB 7049 Topseal cup 400ml	rPET / transp.	Ø 95 mm, 108mm	11,5 gram	✓	✓
RB 7025 Insertcup 100ml	rPET / transp.	Ø 95 mm, 30 mm	2,4 gram		✓
RB 7511 Lid ø 95 mm flat	rPET / transp.	Ø 95 mm, 15 mm	3,2 gram		
RB 7526 Lid ø 95 mm dome without hole	rPET / transp.	Ø 95 mm, 45 mm	6 gram		



RB 7046



RB 7062



RB 7047



RB 7048



RB 7049



RB 7025



RB 7511



RB 7526

RPET TOP- SEAL CUPS Ø110 MM



rPET topseal cups \varnothing 110 mm

ARTICLE NO, ARTICLE DESCRIPTION	MATERIAL / COLOR	DIMENSIONS (diameter x height)	WEIGHT	PRINT	TOPSEAL
RB 7238 Topseal cup 175ml	rPET / transp.	\varnothing 110 mm, 32 mm	6 gram	✓	✓
RB 7239 Topseal cup 250ml	rPET / transp.	\varnothing 110 mm, 45 mm	9 gram	✓	✓
RB 7240 Topseal cup 300ml	rPET / transp.	\varnothing 110 mm, 60 mm	11 gram	✓	✓
RB 7231 Topseal cup 400ml	rPET / transp.	\varnothing 110 mm, 78 mm	13,5 gram	✓	✓
RB 7561 Lid 110 mm	rPET / transp.	\varnothing 110 mm	4,4 gram		



RB 7238



RB 7239



RB 7240



RB 7231



RB 7561

RPET TOP- SEAL CUPS Ø115 MM



rPET topseal cups ø115 mm

ARTICLE NO, ARTICLE DESCRIPTION	MATERIAL / COLOR	DIMENSIONS (diameter x height)	WEIGHT	PRINT	TOPSEAL
RB 7229 Topseal cup 250ml	rPET / transp.	Ø 115 mm, 42 mm	12 gram	✓	✓
RB 7235 Topseal cup 300ml	rPET / transp.	Ø 115 mm, 49 mm	12,5 gram	✓	✓
RB 7230 Topseal cup 350ml	rPET / transp.	Ø 115 mm, 57 mm	13 gram	✓	✓
RB 7226 Topseal cup 550ml	rPET / transp.	Ø 115 mm, 80 mm	12 gram	✓	✓
RB 7241 Topseal cup 750ml	rPET / transp.	Ø 115 mm, 110 mm	20,5 gram	✓	✓
RB 7203 Insert cup	rPET / transp.	Ø 115 mm	4 gram		
RB 7556 Lid 115 mm	rPET / transp.	Ø 115 mm	5,7 gram		



RB 7229



RB 7235



RB 7230



RB 7226



RB 7241

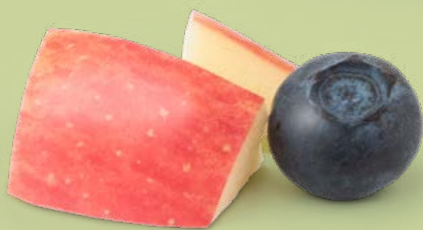


RB 7203



RB 7556

RPET DELICIRCLE CUPS Ø115 MM



rPET delircle cups ø115 mm + lids

ARTICLE NO, ARTICLE DESCRIPTION	MATERIAL / COLOR	DIMENSIONS (diameter x height)	WEIGHT	PRINT	TOPSEAL
RB 7220 Delircle 240 ml	rPET / transp.	Ø 115 mm, 44,5 mm	9,8 gram	✓	✓
RB 7244 Delircle 300 ml	rPET / transp.	Ø 115 mm, 50 mm	10 gram	✓	✓
RB 7221 Delircle 375 ml	rPET / transp.	Ø 115 mm, 60 mm	12 gram	✓	✓
RB 7222 Delircle 550 ml	rPET / transp.	Ø 115 mm 81 mm	12,8 gram	✓	✓
RB 7223 Delircle 750 ml	rPET / transp.	Ø 115 mm, 108 mm	18 gram	✓	✓
RB 7236 Insert cup delircle	rPET / transp.	Ø 115 mm, 15 mm	3,5 gram		✓
RB 7555 Innerlid delircle without hole	rPET / transp.	Ø 115 mm	5,8 gram		
RB 7567 Innerlid delircle with hole	rPET / transp.	Ø 115 mm	5,8 gram		



RB 7220



RB 7244



RB 7221



RB 7222



RB 7223



RB 7236



RB 7555



RB 7567

RPET TOPSEAL BOWLS Ø150MM



rPET topseal bowls ø150 mm

ARTICLE NO, ARTICLE DESCRIPTION	MATERIAL / COLOR	DIMENSIONS (diameter x height)	WEIGHT	PRINT	TOPSEAL
RB 7124 Bowl 150 mm /50 H	rPET / transp.	Ø 150 mm, 50 mm	18 gram	✓	✓
RB 7123 Bowl 150mm /90 H	rPET / transp.	Ø 150 mm, 90 mm	23 gram	✓	✓
RB 7570 Lid	rPET / transp.	Ø 150 mm, 11 mm	9,8 gram		
RB 7252 Insert pad	black	Ø 150 mm			



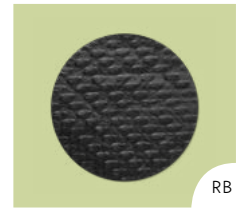
RB 7124



RB 7123

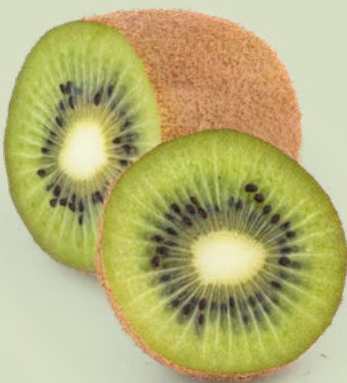


RB 7570



RB 7252

RECTANGULAR RPET TRAYS



Rectangular rPET trays

ARTICLE NO, ARTICLE DESCRIPTION	MATERIAL / COLOR	DIMENSIONS	WEIGHT	PRINT	TOPSEAL
RB 7210 Topseal tray 250ml	rPET / transp.	144 x 106 mm, 24 mm	8 gram		✓
RB 7211 Topseal tray 320ml	rPET / transp.	144 x 106 mm, 33 mm	10 gram		✓
RB 7212 Topseal tray 420ml	rPET / transp.	144 x 106 mm, 43 mm	10 gram		✓
RB 7213 Topseal tray 500ml	rPET / transp.	144 x 106 mm, 51 mm	10 gram		✓
RB 7206 Topseal tray 570ml	rPET / transp.	182 x 132 mm, 36 mm	16 gram		✓
RB 7207 Topseal tray 800ml	rPET / transp.	182 x 132 mm, 51 mm	16 gram		✓



RB 7210



RB 7211



RB 7212



RB 7213



RB 7206



RB 7207

MUSSEL- TRAYS



Mussel trays

ARTICLE NO, ARTICLE DESCRIPTION	MATERIAL / COLOR	DIMENSIONS	WEIGHT	TOPSEAL
RB 7430 Musseltray 1 kilo	PP	279 x 176 x 50	27 gram	✓
RB 7431 Musseltray 2 kilo	PP	279 x 176 x 85	39,4 gram	✓
RB 7432 Musseltray 2 kilo	PP	276 x 176 x 95	39,4 gram	✓



SPECIALS





 **Poorthuis**
packaging

Address:
De Watergang 29
7671 SV Vriezenveen
The Netherlands

Telephone:
+31 (0) 546 563 313

Email:
sales@poorthuisbv.nl

Website:
www.poorthuispackaging.nl